

# ONE FOR ALL

For a Sustainable Built Environment

# About

My name is Dora Rebola.

With a certified BREEAM Assessor and sustainability architect within our company, we are committed to driving the future of eco-friendly architecture. We focus on rigorous research and innovative design, specializing in sustainable materials and advanced construction techniques to continuously improve the environmental performance of new buildings. Our expertise includes **BREEAM and LEED certification, Life Cycle Assessment (LCA), Whole Life Cycle Assessment (WLCA), Environmental Product Declarations (EPD), Material Passports, and Circularity Strategy.**

## Education

### Architecture Degree (1997 - 2004)

Architecture School in the O'Porto University (FAUP)  
Final Project (Investigation) "Morphological Influences of the Sustainability Practices in the South of Iberia Peninsula"

### **BREEAM UK New Construction, BREEAM International New Construction, BREEAM International In-use, BREEAM Spain Residential, BREEAM AP and LEED GA**

BRE group, London

### **Circular building products (May 2022)**

TU Delft



## Services

- BREEAM and LEED Certification
- LCA (Life Cycle Assessment)
- WLCA (Whole Life Carbon Assessment)
- EPD (Environmental Product Declaration)
- Material Passport
- Circularity Strategy

# Johnson & Johnson

(With Demeestere & Garmin)

Achievements - Reception Building in the  
Laboratory Campus  
Brussels, Belgium

## Sustainability Focus

BREEAM International NC Certification - Good  
Water Efficiency - 45% reduction (14 liters/person/year)  
Waste Reduction - Over 90% reduction

## Project Overview

Building Type - New administrative and reception  
building  
Size - 6,000 m<sup>2</sup>  
Cost - €2,100,000

The project, completed in July 2016, included BREEAM Project and Construction Management, with a program featuring public areas, offices, meeting rooms, and a gym, all focused on sustainability.



# EIFFAGE

Achievements - Hotel Madalena

Porto, Portugal



## Sustainability Achievements

Pursuing BREEAM International NC 2016 certification - Very Good

- 50% reduction in energy usage
- 45% reduction in water consumption
- Over 90% waste reduction

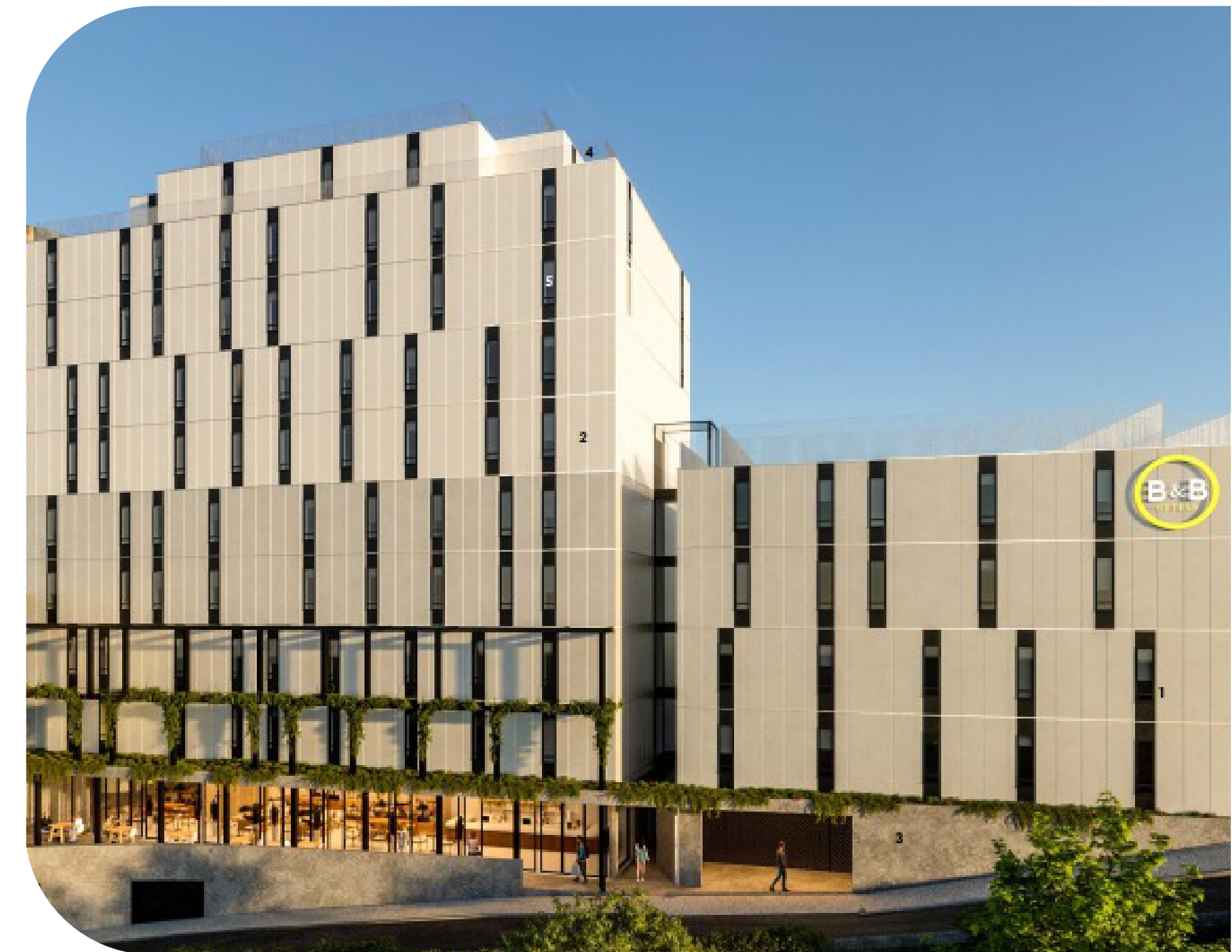
## Project Overview

Building Type - New Hotel

Size - 6,472 m<sup>2</sup>

Cost - €45,000,000

The project is a new hotel with 176 rooms and suites, a restaurant, and a bar. It consists of a single building with a small outdoor space, covering 6,472 m<sup>2</sup>. Currently pursuing a BREEAM International NC certification with a target of 'Very Good,' the project is set for completion in 2025.



# TIDE Construction

Achievements - Lewisham Sstudent Accommodation  
London, Uk



## Sustainability Achievements

BREEAM UK New Construction 2018 certification - Excellent' with 72%

- 57% reduction in energy usage
- 42% reduction in water consumption
- Over 95% waste reduction

## Project Overview

Building Type - Student Accommodation

Size - 29,600 m<sup>2</sup> across 40 floors

Cost - €130,000,000

The project is a new hotel with 176 rooms and suites, a restaurant, and a bar. It consists of a single building with a small outdoor space, covering 6,472 m<sup>2</sup>. Currently pursuing a BREEAM International NC certification with a target of 'Very Good,' the project is set for completion in 2025.



# Material Passport

LCA - Embodied carbon Analyses



A **Material Passport** is a document that provides detailed information about the materials used in a product, such as their composition, sourcing, environmental impact, and potential for reuse or recycling. It is designed to support circular economy practices by enabling better management of resources throughout the product's lifecycle.

The document describes a **sustainable, long-lasting load-bearing** wall panel with a **high circularity score**, designed for easy disassembly and minimal construction waste. It highlights low embodied carbon and energy use, with future improvements aimed at increasing recycled content and material lifespan.



# Infographics

LCA - Embodied carbon Analyses



A **Whole Life Cycle Analysis** (LCA) assesses the environmental impact of a product from raw material extraction to disposal, aiming to reduce impacts like carbon emissions and resource use throughout its entire lifespan.

The document analyzes the carbon footprint of different structural options for a residential building. **Timber frame** has the **lowest embodied carbon**, while LGSF is the highest. Most emissions come from materials like external walls, floors, and structural steel, highlighting the importance of material selection in reducing overall carbon impact.



# More Projects



**Demeestere & Garmin Offices and apartments** in Ronse, Belgium (with Demeestere & Garmin)  
Bespoke (part refurb and part new) BREEAM International New Construction  
Construction Stage - Good Rating

**Rehabilitation of an office building into 5 low terraced houses** (with BBS Environmental)  
BREEAM Refurbishment and Fit-Out - Design and Construction - Very Good

**Terraced houses** in Brighton, UK (with BBS Environmental)  
Code for Sustainable Homes - Design and Construction - Level 4

**Iberdrola Towers** in Barcelona, Spain (with Green Living Projects)  
BREEAM Nueva Construcción - Design and Construction Stage - Excellent

**Districte Administratiu de la Generalitat de Catalunya** in Barcelona, Spain (with PGI)  
LEED ID+C - Design and Construction Stage - Platinum

**The Student Hotel** in Barcelona, Spain (with PGI)  
LEED BD+C - Design and Construction Stage - Gold

**Comunidad Residencial Lumine** in Salou, Vila-seca (with PGI)  
BREEAM Vivienda - Design and Construction - Very Good

**New offices in calle Badajoz** in Barcelona from Battle i Roig (with PGI)  
LEED BD+C - Construction Stage - Excellent

**St. James Student Accommodation** in London, UK (with Evolusion Innovation)  
BREEAM UK New Construction - Construction Stage - Excellent

**Gants Hill Student Accommodation** in London, UK (with Evolusion Innovation)  
BREEAM UK New Construction - Construction Stage - Excellent

**Garlan Industrial Unit** in Vila Nova de Gaia, Portugal, as BREEAM AP (with Garcia e Garcia)  
BREEAM International New Construction - Construction Stage - Very Good

**Kantar Offices** in Matosinhos, Portugal (with Garcia e Garcia)  
BREEAM In-use Very Good

**Castle Group Module \WLCA** (with Evolusion Innovation)

**Modular Homes LCA benchmark**, Churchfield, Dublin (with Evolusion Innovation)

**External panelized wall material/system passport** (with Evolusion Innovation)

**Circularity Strategy for a module** for the Hilton Hotel in Sydney (with Evolusion Innovation)



**With you every step of the way**